

Edwards Rd & 25th St

St. Lucie County, FL

CONTACT:

Name: Christian Yepes

Phone: 727-536-8686

Fax: 727-536-4356

Email: christian@belleairgroup.com

Property Information:

2496 Edwards Rd
Fort Pierce, FL 34982

Property Size:

2.3 Acres -
356' frontage on 25th St
281' frontage on Edwards Rd

Traffic Counts:

25th St: 21,000 cars per day
Edwards Rd: 13,500 cars per day

Zoning:

C-3 General Commercial

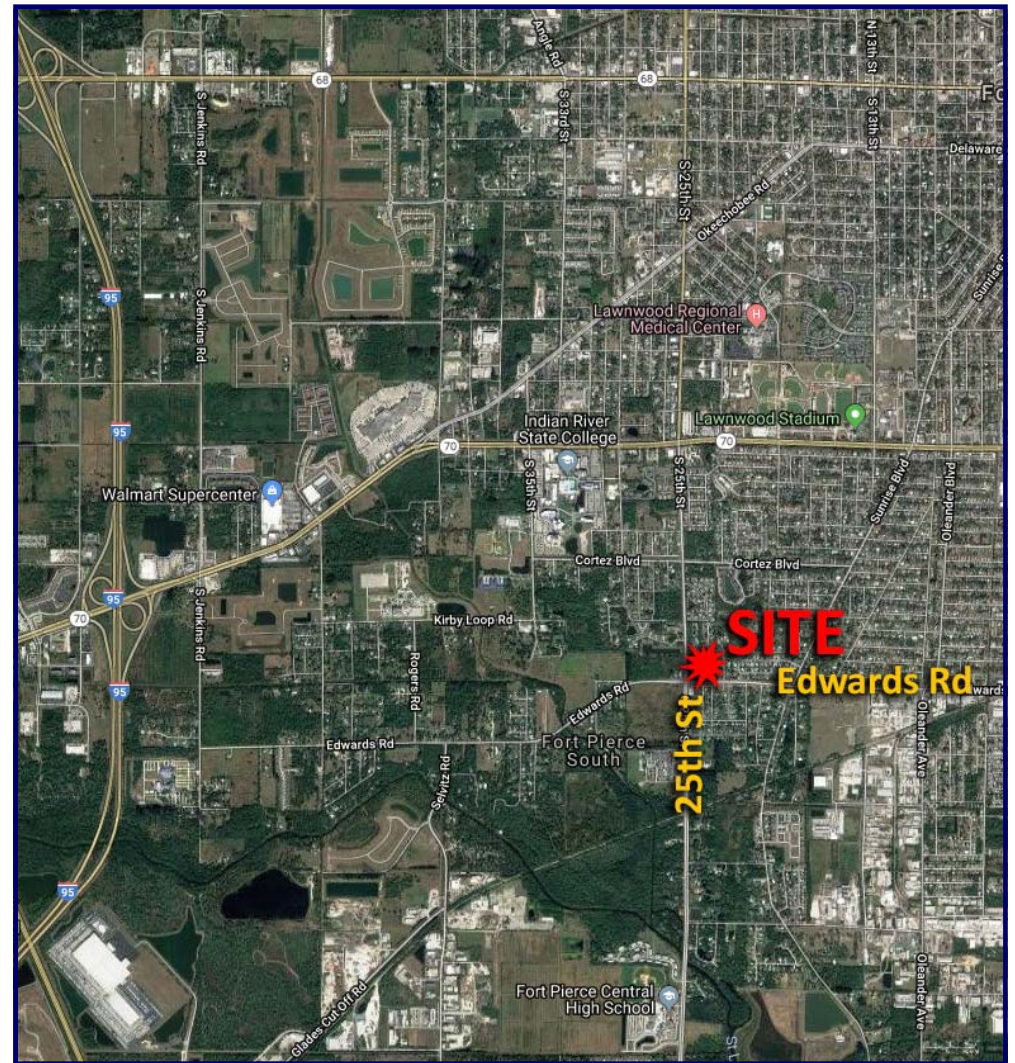
Jurisdiction:

City of Fort Pierce

Notes:

This property is located at the traffic lit corner of Edwards Rd & 25th St. With over 350' of frontage on 25th, the site is highly visible to traffic. Please contact our offices for more information on this site.

www.belleairgroup.com



CORNER AVAILABLE - FORT PIERCE, FL

2496 EDWARDS RD • FORT PIERCE, FL 34982

Edwards Rd & 25th St

St. Lucie County, FL

CONTACT:

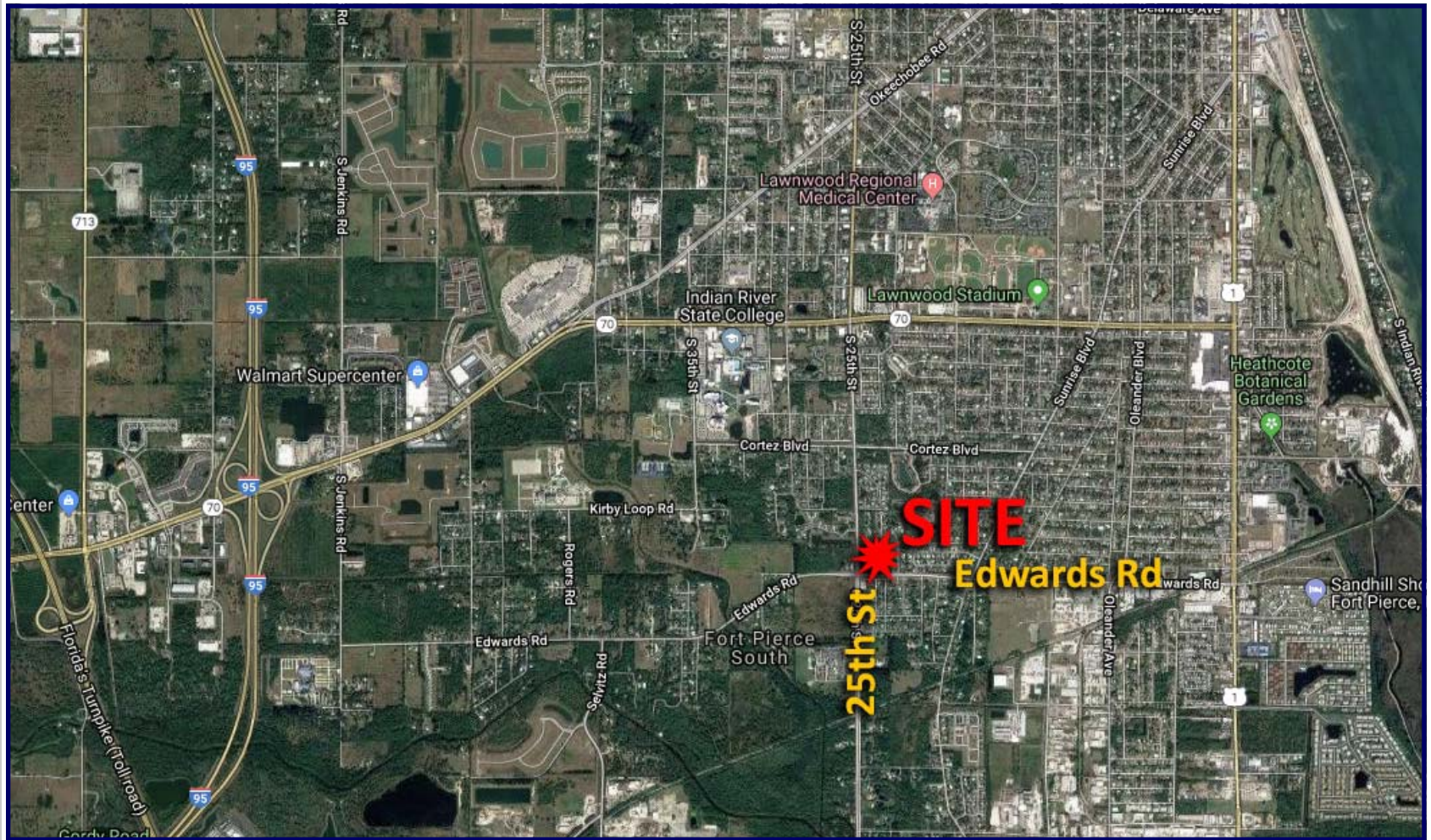
Name: Christian Yepes

Phone: 727-536-8686

Fax: 727-536-4356

Email: christian@belleairgroup.com

LOCATION MAP



PHONE: 727-536-8686 • FAX: 727-536-4356 • Belleair Development Group

CORNER AVAILABLE - FORT PIERCE, FL

2496 EDWARDS RD • FORT PIERCE, FL 34982

Edwards Rd & 25th St

St. Lucie County, FL

CONTACT:

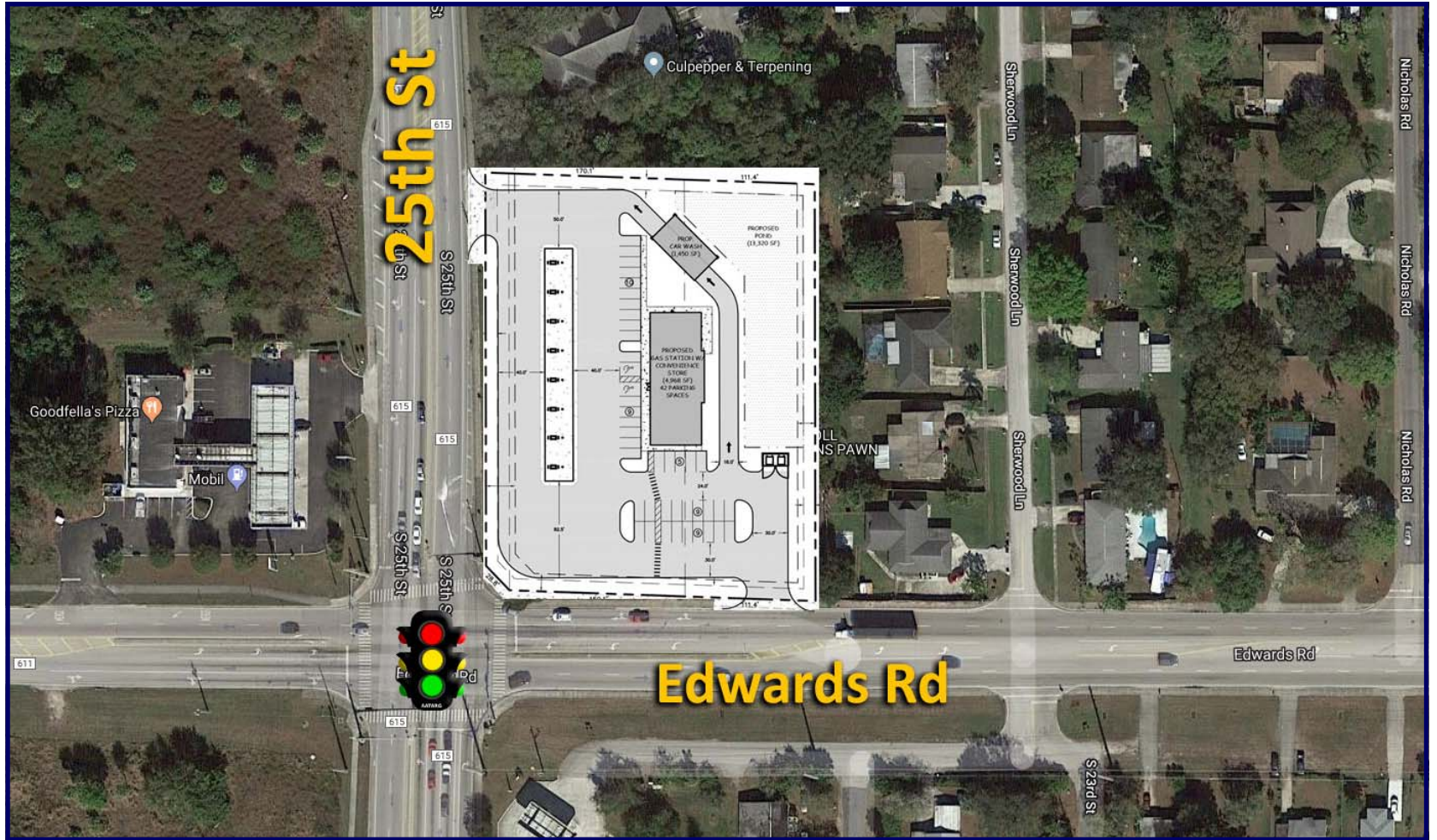
Name: Christian Yepes

Phone: 727-536-8686

Fax: 727-536-4356

Email: christian@belleairgroup.com

AERIAL PHOTO



PHONE: 727-536-8686 • FAX: 727-536-4356 • Belleair Development Group