

COMMERCIAL CORNER - AVAILABLE

BLOOMINGDALE AVE • RIVERVIEW, FL 33578

Bloomington Ave Hard Corner

Hillsborough County, FL

CONTACT:

Name: Christian Yepes

Phone: 727-536-8686

Fax: 727-536-4356

Email: christian@belleairgroup.com

Property Information:

NWC of Bloomingdale Ave & Watson Rd
Riverview, FL 33578

Property Size:

1 acre +/-

Traffic Counts:

Bloomington Ave: 46,000 AADT 2014

Zoning:

Commercial Neighborhood (CN)
PUD restrictions apply

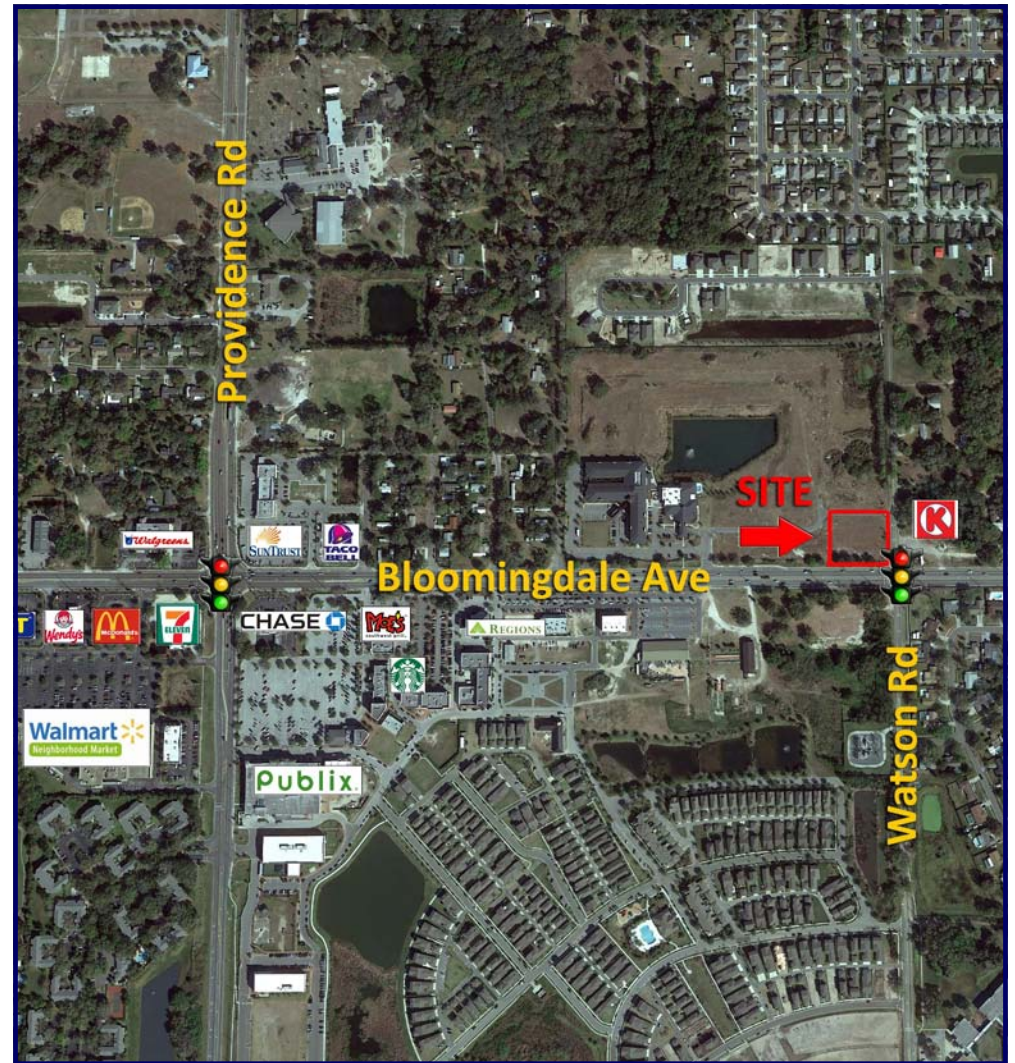
Demographics:

	Population	Avg. Income
1 mile:	9,746	\$61,231
3 miles:	79,404	\$68,426
5 miles:	189,518	\$70,787

Notes:

This property is just east of I-75 and US 301 and is conveniently located at the traffic lit intersection of Bloomington & Watson. Bloomington Ave is a major east-west thoroughfare in Hillsborough County.

www.belleairgroup.com



PHONE: 727-536-8686 • FAX: 727-536-4356 • Belleair Development Group

COMMERCIAL CORNER - AVAILABLE

BLOOMINGDALE AVE • RIVERVIEW, FL 33578

Bloomingdale Ave Hard Corner

Hillsborough County, FL

CONTACT:

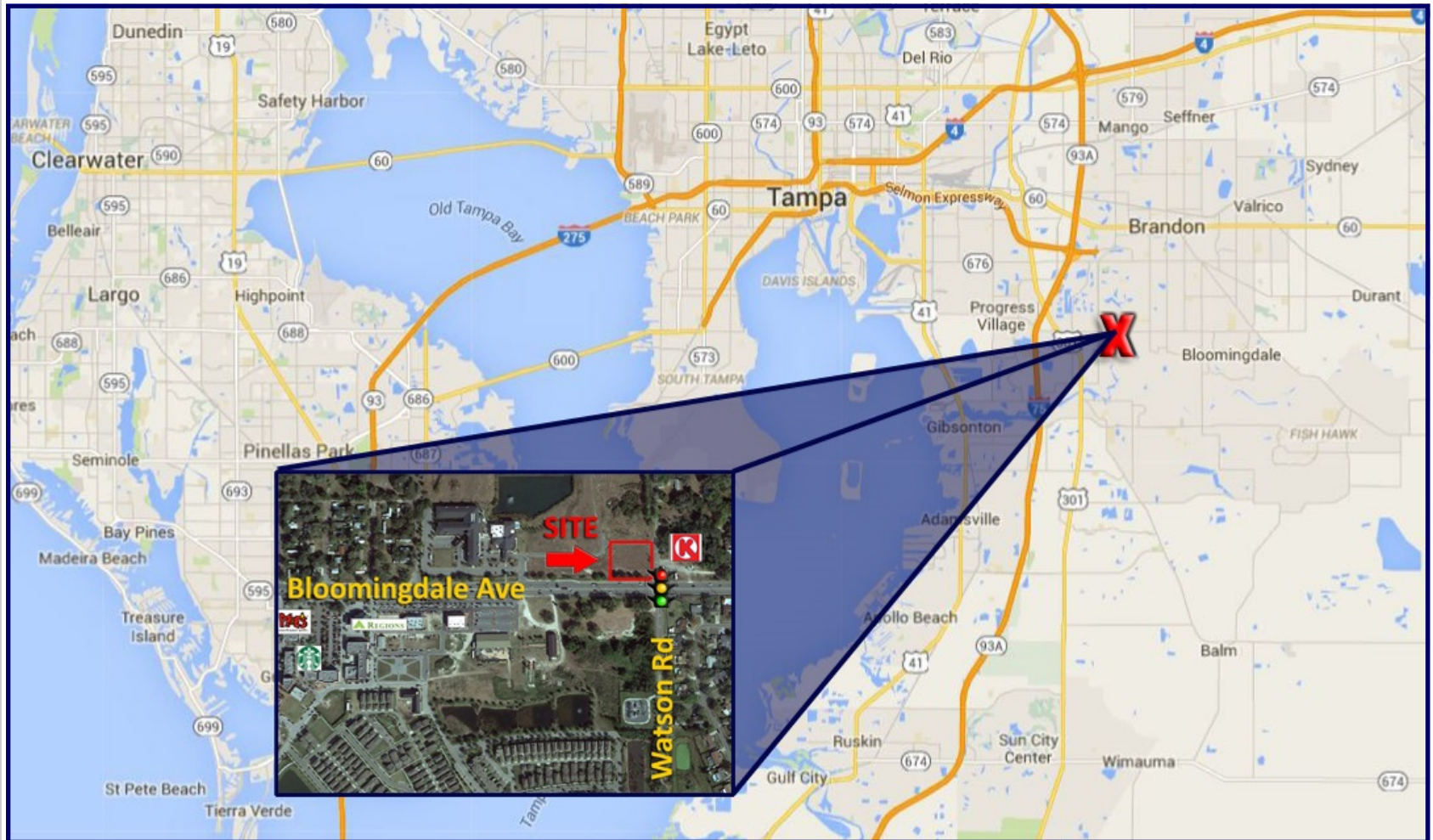
Name: Christian Yepes

Phone: 727-536-8686

Fax: 727-536-4356

Email: christian@belleairgroup.com

LOCATION MAP



PHONE: 727-536-8686 • FAX: 727-536-4356 • Belleair Development Group

COMMERCIAL CORNER - AVAILABLE

BLOOMINGDALE AVE • RIVERVIEW, FL 33578

Bloomington Ave Hard Corner

Hillsborough County, FL

CONTACT:

Name: Christian Yepes

Phone: 727-536-8686

Fax: 727-536-4356

Email: christian@belleairgroup.com

AERIAL PHOTO



PHONE: 727-536-8686 • FAX: 727-536-4356 • Belleair Development Group