

# US - 19 Redevelopment Site

Pinellas County, FL

**CONTACT:**

Name: Christian Yepes

Phone: 727-536-8686

Fax: 727-536-4356

Email: [christian@belleairgroup.com](mailto:christian@belleairgroup.com)

**Property Information:**

2500 34th St N, St. Petersburg, FL 33713  
Parcel ID: 10-31-16-82161-001-0010

**Property/Building Size:**

62,273 total (54,573 heated)  
8 acres +/- (lot size 600' x 590')

**Zoning Info:**

CCS-1 (commercial & light industrial)  
Max bldg. height allowed:48 ft.  
Max impervious: 85%

**Traffic Counts:**

US - 19 (34th St N) 40,000 AADT

**Demographics:**

	Population	Avg. Income
1 mile:	14,640	\$56,392
3 miles:	131,168	\$51,408
5 miles:	290,254	\$56,207

**Notes:**

Excellent redevelopment opportunity in the 34th Street N retail corridor of St. Petersburg, Florida. This square 8± acre parcel has flexible zoning and development incentives are available.



COMMERCIAL RETAIL SITE AVAILABLE

2500 34TH ST N • ST. PETERSBURG, FL 33713

# US - 19 Redevelopment Site

Pinellas County, FL

## CONTACT:

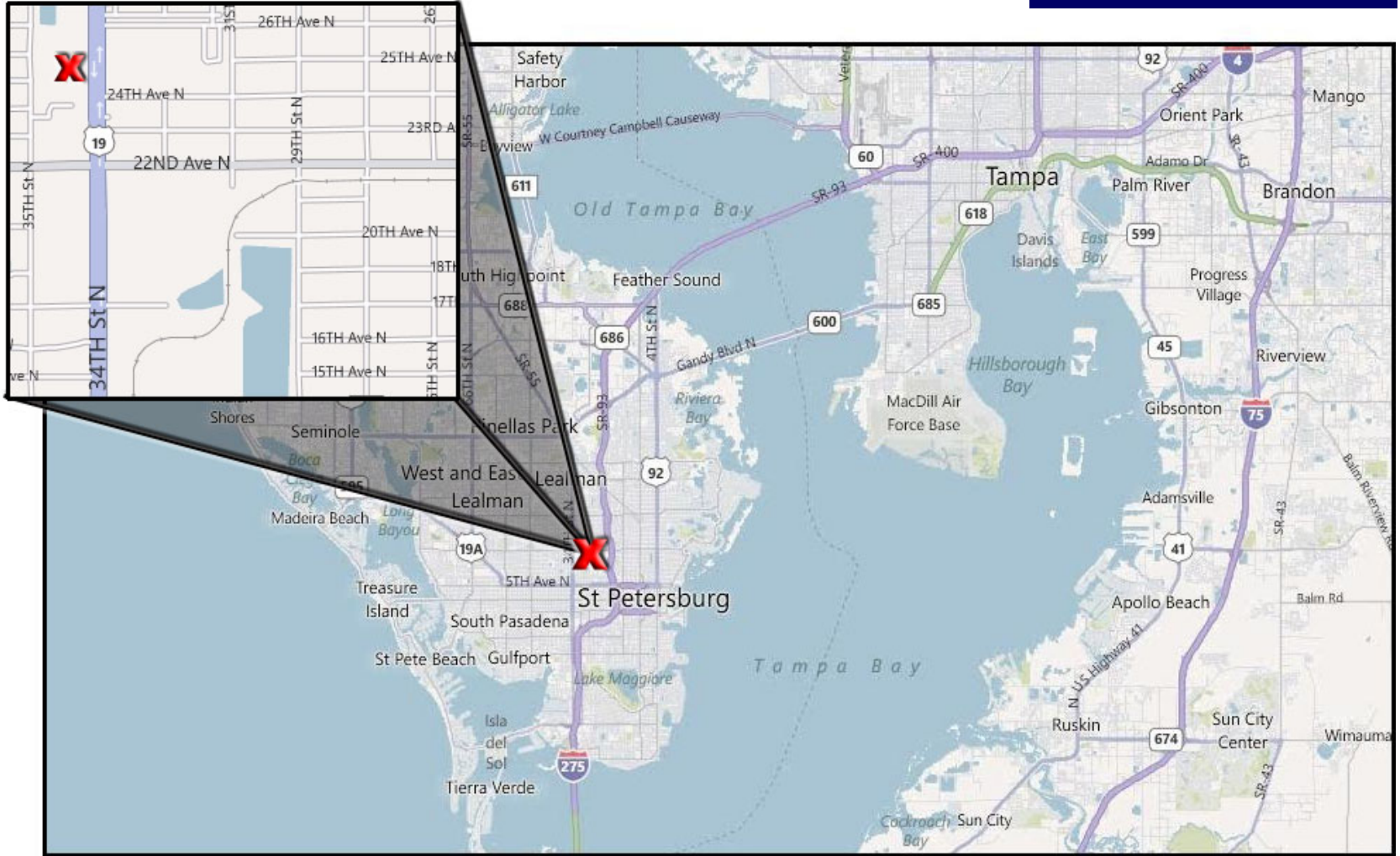
Name: Christian Yepes

Phone: 727-536-8686

Fax: 727-536-4356

Email: [christian@belleairgroup.com](mailto:christian@belleairgroup.com)

## LOCATION MAP



PHONE: 727-536-8686 • FAX: 727-536-4356 • Belleair Development Group

COMMERCIAL RETAIL SITE AVAILABLE

2500 34TH ST N • ST. PETERSBURG, FL 33713

# US - 19 Redevelopment Site

Pinellas County, FL

## CONTACT:

Name: Christian Yepes

Phone: 727-536-8686

Fax: 727-536-4356

Email: [christian@belleairgroup.com](mailto:christian@belleairgroup.com)

## PHOTOS



PHONE: 727-536-8686 • FAX: 727-536-4356 • Belleair Development Group



COMMERCIAL RETAIL SITE AVAILABLE

2500 34TH ST N • ST. PETERSBURG, FL 33713

# US - 19 Redevelopment Site

Pinellas County, FL

## CONTACT:

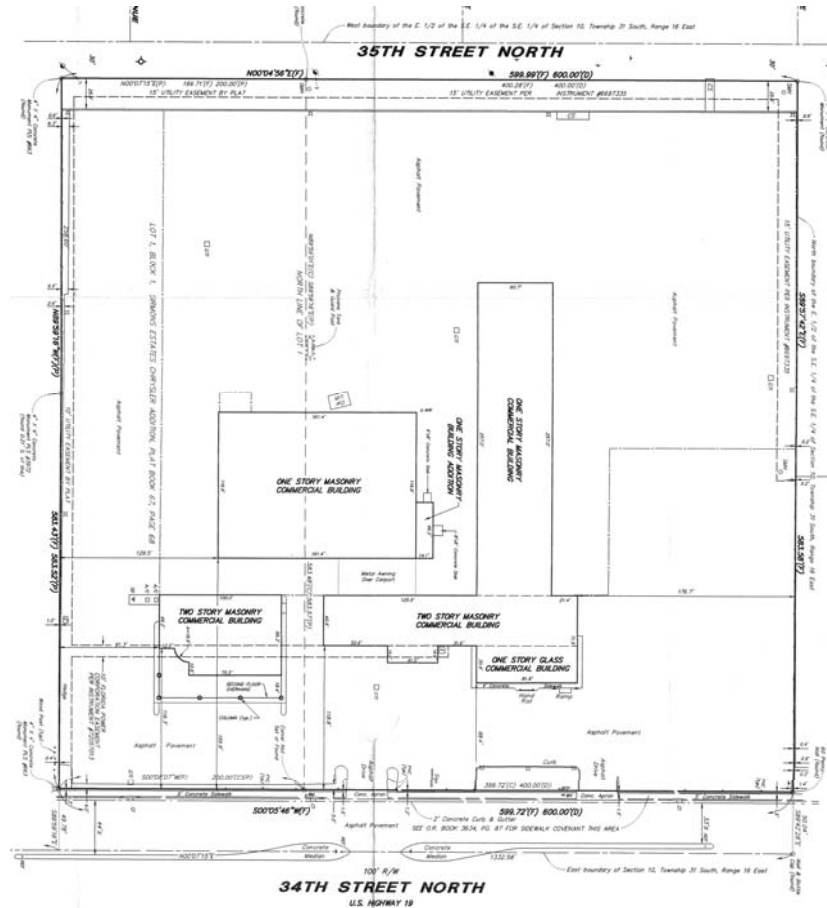
Name: Christian Yepes

Phone: 727-536-8686

Fax: 727-536-4356

Email: [christian@belleairgroup.com](mailto:christian@belleairgroup.com)

## SURVEY & AERIAL



PHONE: 727-536-8686 • FAX: 727-536-4356 • Belleair Development Group